

CHATS ON CHESS

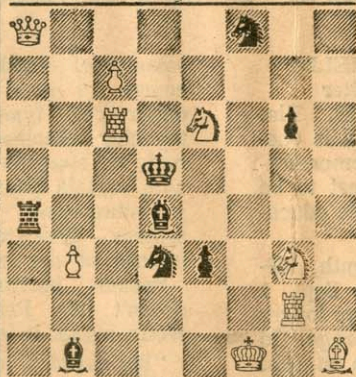
By GEORGE KOLTANOWSKI

"Twenty-six families bear Chess-
rooks in their coats of arms. No
other chess pieces have been thus
borne."

—A Complete Body by Heraldry,
1780, by Joseph Edmondson.

PROBLEM

By E. J. Pniak, Poland



White to play and mate in two
moves. Solution below.

* * *

WRONG STRATEGY

One of the greatest errors in attack
is to weaken your wing without first
closing or being secure in the center
of the board. A simple way of ex-
pressing this would be to say: "Close
the center before you start a wing
attack which may bring risks with
it."

The Black player in the following
game must have overlooked this
elementary rule when he started his
adventurous sacrifice. He tries a
combination which is typical if the
center is safe, but in this case leads
to a fast loss as White, through a
simple exchange gets the upper hand
on the White squares, in which his
opponent became very weak.

Played in the youth championship
of Russia, 1963.

WHITE: Barvik BLACK: Murey

KING'S INDIAN DEFENSE

- | | | | |
|----------|----------|------------------|---------|
| 1.P-Q4 | N-KB3 | 16.NxNch | BxN |
| 2.P-QB4 | P-KN3 | 17.Q-B2(d) | B-N2 |
| 3.N-QB3 | B-N2 | 18.B-Q3 | B-K3 |
| 4.P-K4 | P-Q3 | 19.QR-K1 | KR-Q1 |
| 5.N-B3 | O-O | 20.B-B7ch | K-B1(e) |
| 6.B-K2 | P-K4 | 21.P-B4(f) | NPxP |
| 7.O-O | QN-Q2 | 22.BxP | PxB |
| 8.B-N5 | P-KR3 | 23.RxPch | K-K1 |
| 9.B-R4 | P-KN4(a) | 24.Q-N6ch | K-Q2 |
| 10.B-N3 | NxP(b) | 25.RxB Q-B4ch(g) | |
| 11.NxN | P-KB4 | 26.K-R1 | K-B1 |
| 12.PxP | PxP(c) | 27.R-K8(h) | Q-Q3 |
| 13.N3-Q2 | Q-K2 | 28.QxQ | PxQ |
| 14.P-B3 | PxN | 29.RxRch(i) | KxR |
| 15.NxP | N-B3 | 30.R-B7 | Resigns |

(a) Weakens his pawns unneces-
sarily. With 9 . . . P-B3 he has a good
position. The B on R4 threatens noth-
ing, as the B-Queen can move to R4.

(b) And here is the example of
the wrong strategy being employed.
It looks like suicide.

(c) Perhaps only now did he see
that after 12 . . . PxN; there follows
13.Q-Q5ch.

(d) And now give the situation a
once-over look: Black has achieved
a weak pawn on K4, a listless Bishop
on KB3 and his King's wing is full
of holes, just like Swiss cheese!

(e) And there you have it already.
The King gets chased out. If 20 . . .
K-R1; 21.RxP.

(f) Gives notice: No end-game
here.

(g) If 25 . . . QxR; 26.QxBch, etc.

(h) Stops all tomfoolery, such as
. . . R-Q8ch.

(i) Here it's a question of taste.
29.B-B5ch, K-B2; 30.R-K7ch, K-N3;
31.RxB, wins too.

* * *

SHORT CUT

Played in Bristol, 1906

- | | | | |
|-------------|--------------|-----------|--------|
| WHITE: Cook | BLACK: N. N. | | |
| 1.P-KB4 | P-Q4 | 8.P-KR4 | N-R4 |
| 2.P-K3 | P-QB4 | 9.QxN | BxN(a) |
| 3.P-QN3 | P-K3 | 10.QxRPch | KxQ |
| 4.B-N2 | N-KB3 | (b) | |
| 5.N-KB3 | B-K2 | 11.RPxBch | K-N1 |
| 6.B-Q3 | O-O | 12.R-R8 | mate |
| 7.N-N5 | P-KN3 | | |

(a) Naturally, if 9 . . . PxQ; 10.
BxP mates.

(b) But this offer cannot be re-
fused.

Solution to problem above is:
1.N-R5.

* * *

Valley of the Moon Chess Festival,
Aug. 2, 1964, invitation to all chess
enthusiasts:

You are cordially invited to attend
the 14th Annual Chess Festival in
the Sonoma Plaza on Sunday, Aug.
2, 1964. It will be sponsored by the
Chamber of Commerce and directed
by George Koltanowski, international
chess master.

The main feature of the festival
is a short tournament to be held
between the hours of 10 a.m. and 6
p.m. and will consist of three (3)
games. For those using chess clocks,
the time limit will be 45 moves in
45 minutes. Games may be started
as late as 12 noon and will count if
all three games are completed.

Participants will be classified ac-
cording to playing strength as indi-
cated on their applications. Classes
are as follows: "A," "B," "C." Also,
there will be sections for women and
juniors (14 years and under). Tour-
nament will be played in groups of
four players; each group will have
its own prizes and points.

Entry fee up to and including July
30, 1964, \$2. Entry fee subsequent
to July 30, \$3. Entry fee must ac-
company application and be sent to
George C. Powell, manager, Sonoma
Valley Chamber of Commerce. Make
check payable to Sonoma Valley
Chamber of Commerce. It is urged
that entries be submitted before July
30 so that the tournament director
can make the proper pairings well
before the date of the tournament.